
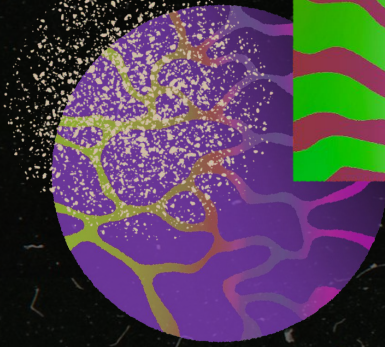
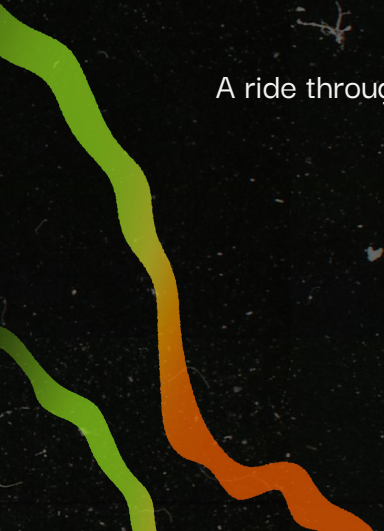


A.S.S. 2.28.24

Mike Mansur Mtg 

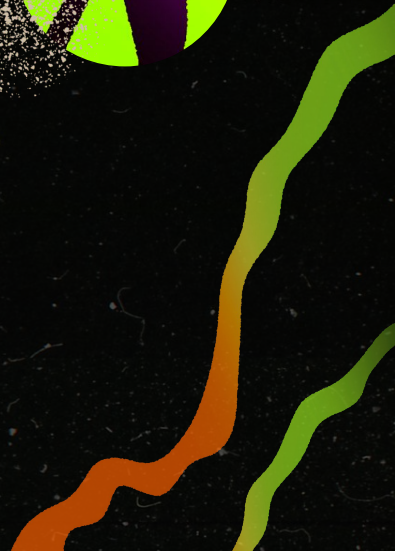
A ride through the restoration wave baby





Mike Mansur

For real this time bro





Announcements and Such




A.S.S. Social

- March 8
- start 7:02 pm
- end 11:17 pm
- ASS House
- be there or we will openly shame you possibly



vert





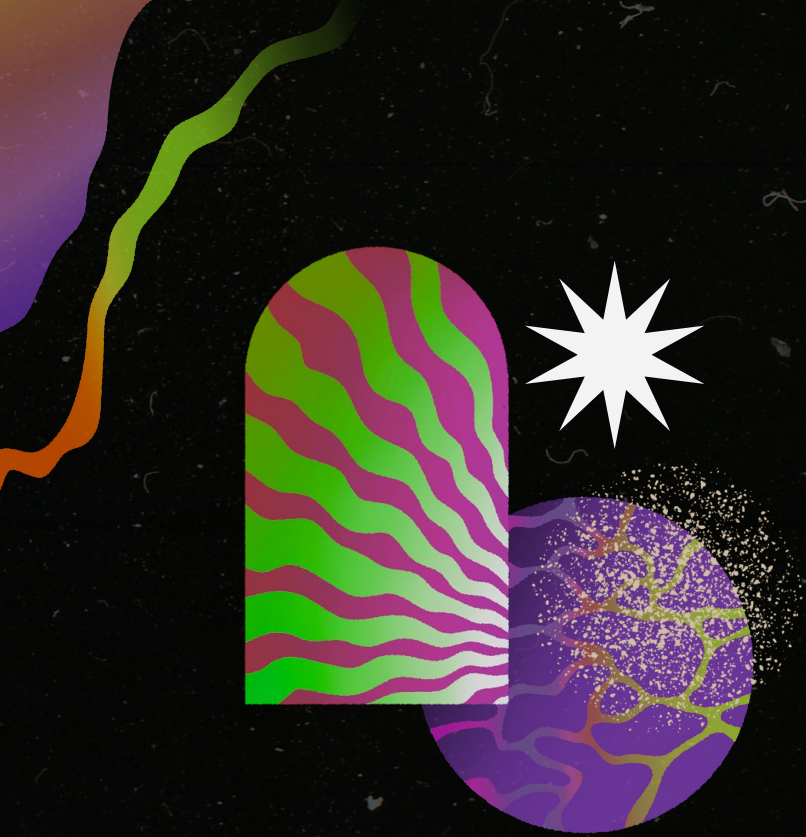
A.S.S. Social

March 8

7:02pm start

11:17pm end





D&P
M.H. Dig
TAG

Stay After!



T.A.G. Planning

Signing
Waivers

woohoo

Driving
Itinerary

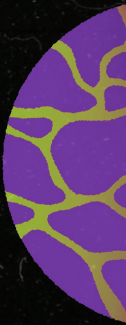
Research and
preparation



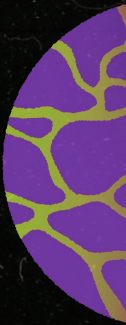


Passengers

Who goes
where?

Est. Prices
for Gas

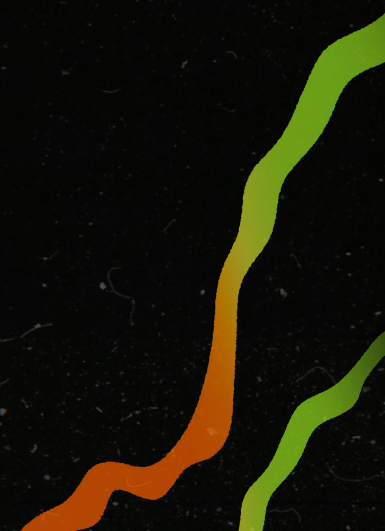
Our best guess



- 
- 
- 
- 
- 
1. Confirm Trip Spots
 2. Sign Waivers

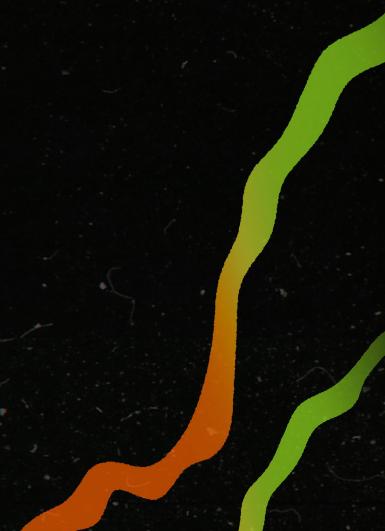


1. Logistics



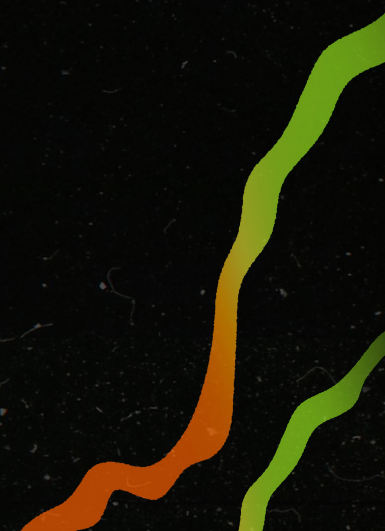


1. Passengers in Cars





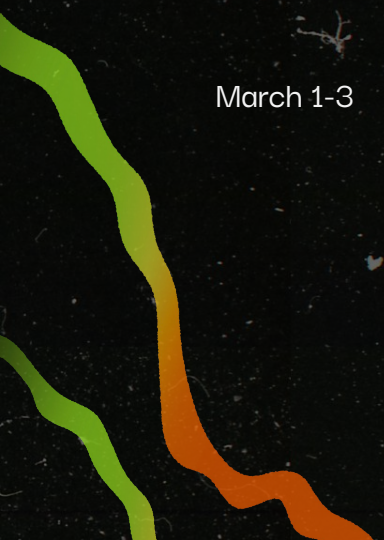
1. Gas Price Estimation - To and From



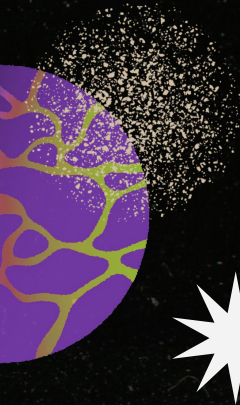


Deep & Punkin

March 1-3



Driver	Passenger	Passenger	Passenger
Jacob	Quinn	Ethan	Madhu
Jakob	Mark	Dylan	Tristan
Jenna	Daniel	Jasmin	
Paige	Drew	Kyle	Will



logistics – Friday

- 2:47 pm meet
- 3:09 pm leave parking lot
- 6:30 pm Fredericksburg HEB
 - H-E-B, 407 S Adams St, Fredericksburg, TX 78624
- Whataburger, Fredericksburg - leave 8pm
 - Whataburger, 1301 E Main St, Fredericksburg, TX 78624
- 9:30 pm arrive Shell, Uvalde
 - Shell, 100 Uvalde Rd, Rocksprings, TX 78880
- 10:10 pm arrive Deep & Punkin Nature Preserve
- 10:45 pm arrive cabin

logistics-Friday

- 6pm arrive at Walmart
- 6:15pm leave Walmart
- 11:30 pm arrive Shell, 100 Uvalde Rd, Rocksprings, TX 78880
- 12:10 pm arrive at Deep & Punkin Nature Preserve
- 12:45 pm arrive cabin



Logistics- Saturday

- 9am wake up
- 10am be prepared to leave cabin
- 10:30am arrive at Deep- group 1
- 10:30-11:00am safety talk, gear check, rabbit hole- group 1
- 11am-5pm in cave - group 1
- 6-6:45pm Service project

- 9am wake up
- 10am be ready for service project
- 10am-11am service project
- 11:30am arrive at Deep
- 12pm-5pm in cave



Logistics– Saturday

- 7:45pm leave cabin for Punkin
- 8:15-9:00 safety talk, gear check, rigging
- 9pm-11pm dropping Punkin